



ANNIVERSARY 3.0



**ANNIVERSARY 3.0** Model number: 32ANN28603AH19

**3 beds • 2 baths • 1680 sq.ft. • 28' width • 60' depth**

Our home building facilities invest in continuous product and process improvements. Plans, dimensions, features, materials, specifications and availability are subject to change without notice or obligation. Renderings and floor plans are representative likenesses of our homes and may differ from the actual homes. We invite you to tour a Home Center near you and inspect the highest value in quality housing available or call (210) 673-9025 to speak with a Home Consultant. Copyright 2017, CMH. All rights reserved.

<https://www.claytonhomessanantonio.com>

**CLAYTON HOMES-SAN ANTONIO**

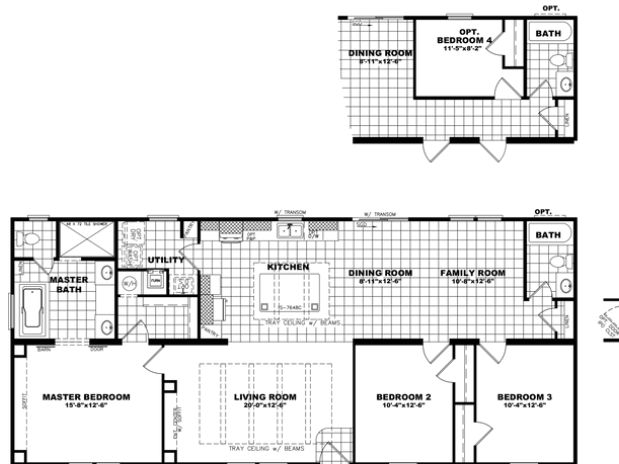
3225 SW LOOP 410  
SAN ANTONIO, TX 78227

Monday - Thursday: 9am - 5:30pm  
Friday: 9am - 5:30pm  
Saturday: 9am - 5pm  
Sunday: Closed

(210) 673-9025



# ANNIVERSARY 3.0



## ANNIVERSARY 3.0

Model #: ANN28603A  
Drawing #:  
32M454

## ANNIVERSARY 3.0 Model number: 32ANN28603AH19

**3 beds • 2 baths • 1680 sq.ft. • 28' width • 60' depth**

Our home building facilities invest in continuous product and process improvements. Plans, dimensions, features, materials, specifications and availability are subject to change without notice or obligation. Renderings and floor plans are representative likenesses of our homes and may differ from the actual homes. We invite you to tour a Home Center near you and inspect the highest value in quality housing available or call (210) 673-9025 to speak with a Home Consultant. Copyright 2017, CMH. All rights reserved.

<https://www.claytonhomessanantonio.com>

## CLAYTON HOMES-SAN ANTONIO

3225 SW LOOP 410  
SAN ANTONIO, TX 78227

Monday - Thursday: 9am - 5:30pm  
Friday: 9am - 5:30pm  
Saturday: 9am - 5pm  
Sunday: Closed

(210) 673-9025